

# ***TACMOLLE***

## PRODUCT INSTALLATION MANUAL



# TACMOLLE



1. Open the lock cover on top of the storage box.



2. Insert the key and turn clockwise to unlock (both keys can be used).



3. Attention: Align the key notch with the red mark on the lock hole.



4. Unlock both locks.

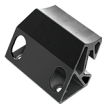


5. Open the storage box.

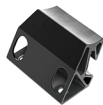


6. Remove the installation accessories.

# PACKAGE INCLUDED



①



②



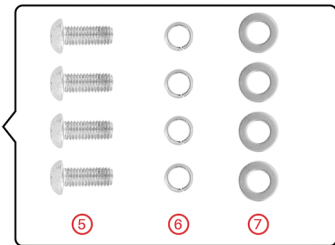
③



④



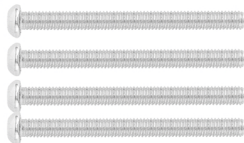
⑧ (BUILT-IN)



⑤

⑥

⑦



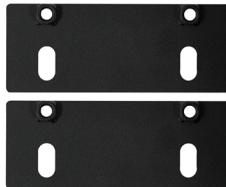
⑨



⑩



⑪



⑫

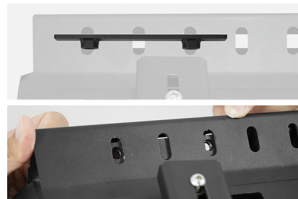
# INSTALLATION INSTRUCTIONS



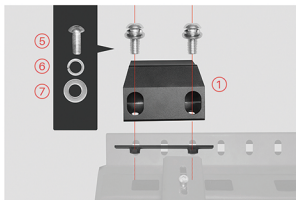
1. Place the storage box on a soft cushion and gather the required installation tools.



2. Prepare ① and ② and install them on the top of the storage box, ensuring that the hooks are facing outward.



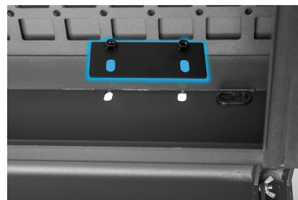
3. Place the built-in ⑧ at the top of the storage box into the corresponding holes, making sure the side with the nuts faces down and the smooth side faces up.



4. Connect ⑤, ⑥, and ⑦ in sequence. While holding ⑧ with your hand, insert the connected ⑤, ⑥, and ⑦ into the corresponding holes that match ① and ⑧. Refer to the diagram and secure the connection by tightening the screws.



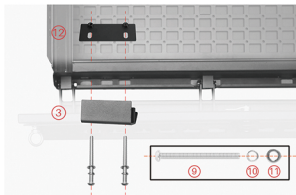
5. Follow the same steps to install ②.



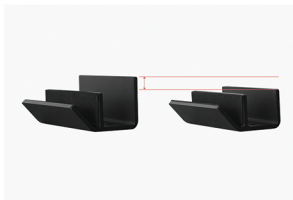
6. Prepare to install ③ and ④. Open the storage box and place ⑫ into the corresponding hole, making sure the side with the nuts faces up and the smooth side faces down.



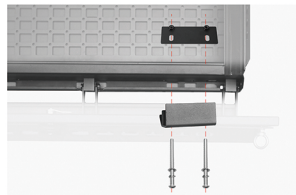
# INSTALLATION INSTRUCTIONS



7. On the left side of the storage box, connect ③, ⑩, and ⑪ together in order, then insert them one by one into the corresponding holes for ③ and ⑫, and gently tighten to temporarily secure.



Note : ③ and ④ come in different lengths, as shown in the diagram. For driver-side installation, place ③ near the rear door and position ④ closer to the tailgate.



For passenger-side installation, place ③ on the right side of the storage box, near the rear door, and position ④ near the tailgate.



8. Use the same steps to install ④, ensuring that ①, ②, ③, and ④ are properly installed, and prepare to hang the storage box on the rain gutter.



9. As shown in the diagram, hang ① and ② on the rain gutter without tightening the screws for now.



10. Adjust the position of the storage box by moving it left or right until it is in the optimal position.

# INSTALLATION INSTRUCTIONS



11. It is recommended to position the storage box to block the rear window.



12. After inserting ③ and ④ into the rear window groove, gently tighten the screws to ensure that the bracket does not come out of the groove. No need to tighten firmly at this point.



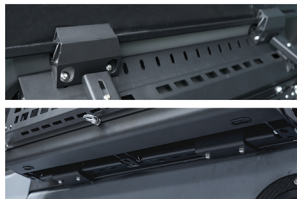
13. Adjust the gap between ① and ② to ensure that the top of the storage box is flush with the vehicle body. Follow the instructions in the diagram by holding ① and ② and gently pushing the storage box outward.



14. After adjusting, securely tighten the screws for ① and ②.



15. Sequentially tighten the screws for ③ and ④.

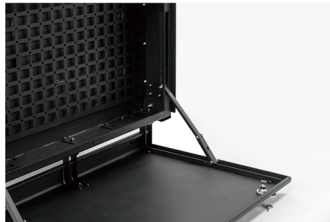


16. Firmly shake the storage box to ensure proper installation.

# INSTALLATION INSTRUCTIONS



1. Open the lid of the storage box and move the support rod to the corresponding slot according to the desired angle of the worktable.



2. Adjust the worktable to the appropriate angle to ensure items won't fall off.

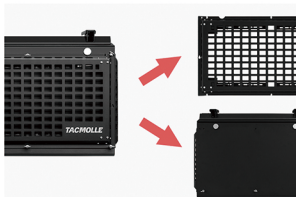


Demonstration of the open worktable

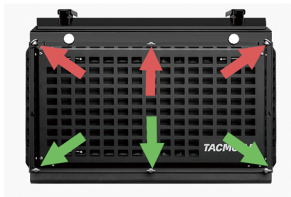


3. Lift up the two folding support rods to fold up the worktable.

# DETACHABLE TABLE USER GUIDE



Disassembly State



1. First, loosen the three screws at the bottom (indicated by the green arrows) without completely unscrewing them. Then unscrew the three screws at the top (indicated by the red arrows).



2. Lift the table upwards and remove it.



3. Open all the table legs.



4. Table in the open state.



5. Pull up the springs and push inward to fold the table legs.

# PRODUCT DEMONSTRATION



***TACMOLLE***